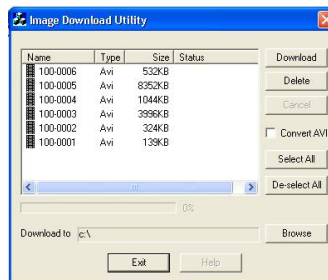


FlyCamOne² - Firmware Update

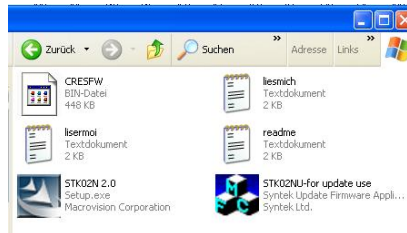
- Step 1 Download the file FCO2.zip
- Step 2 unpack the file and store unzipped files at your local drive at C:/FCO2
Do not start the installation out of the Zip-menu!
- Step 3 Shut down your Virus Scanner (a similar coding in the FCO2-program will be detected as adware sometimes) else the scanner might destroy to program.
- Step 3 Install the program STK02N 2.0
if you do this a second time the program will be erased! (Find the file at "installed programs" under "system control" – if you are not sure about the status.) Make sure that the process will not be stopped by your virus scanner.
- Step 4 Shut down your computer when the installation has been finished!
Restarted virus scanner can continue his work now!
- Step 5 Turn on the FlyCamOne2 and select "WC" within the FlyCamOne²'s menu.
- Step 6 Connect the Flycamone² with the USB-port of your computer.
Your Computer detects the new component and will install the software.

- Step 8 A download utility will open.
Press Exit to leave. (Right now, we do not need that tool.)



The download utility will show the stored files on your card.

- Step 9 Return to your folder at C:/FCO2 and start the update program called "STK02NU-for update use"

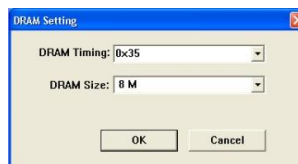


- Step 10 Press "Update" at the following window.



If you will get "Can't initialize the device" your virus scanner cuts important parts of the program. Remove the STK02N2.0 and start again. Make sure that your scanner is off!

- Step 11 Set the Dram Timing to "0x35" and the size to "8M"



- Step 12 Your firmware has successfully being installed.



FlyCamOne² – Frequently Asked Questions

How does the Flycamone2 save the video?

The cam works with an SD memory card. You need to put in a SD Memory Card (256MB - 2 GB Cards). The memory card is not included. SD Cards are available at electronic stores. Most Digital cameras use SD Memory Cards. SD Cards look like this:

How long can I record Video?

That is depending on the size of your memory card. You can record approx. 45 minutes onto a 2GB memory card.

How do I watch my Videos?

The camera comes with an USB cable to connect the camera to your computer. Once connected to your computer, the camera is visible as a Disc Drive. Download the videos to your computer first and watch them with e.g. Media Player. The Cam is Macintosh compatible.

How can I make the lens move remote controlled?

The camera comes with an adapter to connect a servo (as used in r/c planes) to the lens. You can than control the servo with a free channel on you remote control system.



How can I trigger the camera remotely?

Use the socket, connect a free channel from your remote control (switch) to the base plate (comes with the camera). See Base plate allocation for details. The The only extra things you need for that is the remote control unit (if you don't have it, find it on ebay).

Can I use an external Power supply?

Yes you can. The camera comes with a base plate to connect.

It has to be 5 Volt 500mA. An external Battery Pack with 1000mAh will be available from August '08.

My SD Card does not stay in the camera

The SD Card has to be pushed fairly deep, until you hear "click". If not sure, please use a pen.

Is the camera Apple Macintosh (r) compatible?

Yes

Does heavy vibration affect the video quality?

Heavy vibration, e.b. from a gas engine can cause flickering & waving. The cam comes with some foam Velcro pads to avoid these problems. Try to center the rotor & engines.

Does heavy acceleration affect the video quality?

No, acceleration is usually not a problem. Heavy crash can destroy the camera. No guarantee for any recording of crash.